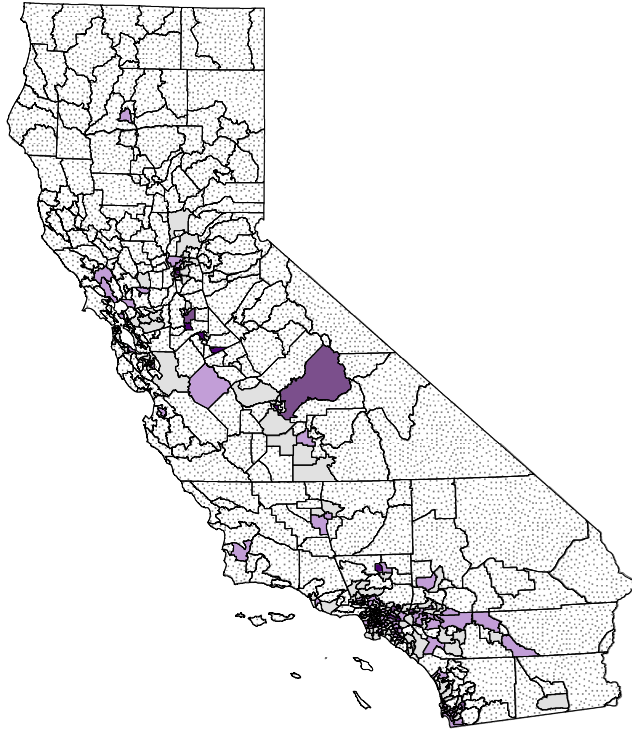
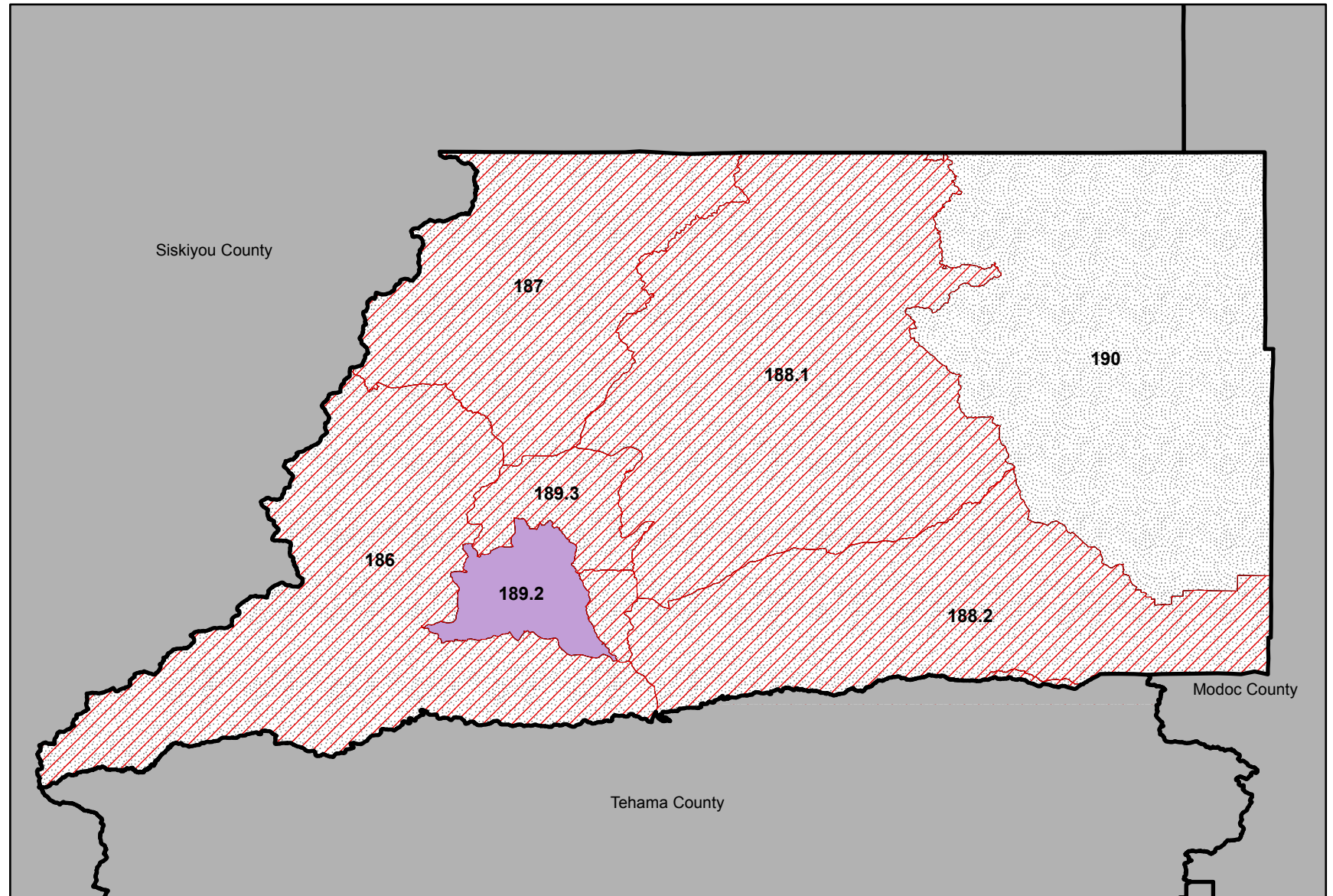


# California



## Advanced Stage Cervical Cancer

- 75%+ advanced stage cervical cancer
- 70-74% advanced stage cervical cancer
- 53-69% advanced stage cervical cancer
- Not significantly different from comparison group
- Not calculated (<15 cases)
- Medical Service Study Areas (MSSAs)
- Primary Care Shortage Areas (PCSAs)



## Advanced Stage Cervical Cancer in Shasta County Communities, California, 2009-2013



Prepared by: California Cancer Registry, California Department of Public Health.