



SEER*Edits software is distributed by the SEER Program of the National Cancer Institute. Its primary purposes are to validate the cancer incidence data collected by the SEER registries and to generate standard submission reports. The software is distributed with the most recent version of the incidence data edits defined by the SEER Program and maintained by the NAACCR EDITS Committee.

Installing SEER*Edits 6

1. Uninstall SEER*Edits 5

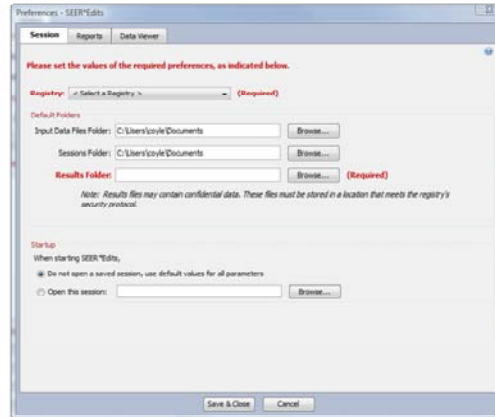
- This step is optional, but recommended.
- Updates to the edits are available in the SEER*Edits software versions 6 and later. Version 5 has edits updated through Oct 2010 and does not include edit corrections or NAACCR 12.1 updates.

2. Download and Install SEER*Edits 6

- The software is available on the SEER Submission Reports Portal

The edits provided in old versions of the SEER*Edits software are out of date. Version 5 has edits updated through Oct 2010 and does not include corrections; and it does not include revisions based on the release of NAACCR 12.1. SEER*Edits was completely re-written in version 6. The program is written in Java instead of C; and a new installation program is used. The new installation program will not auto-remove versions 5 or earlier. To prevent confusion, manually uninstall the SEER*Edits 5 before installing SEER*Edits 6. Instructions are available on the SEER*Edits portal page.

System Preferences



Registry

This will be used as the default for the Registry parameter in a new Session. This parameter is used to determine the default First Year Dx and to validate Registry ID in data files.

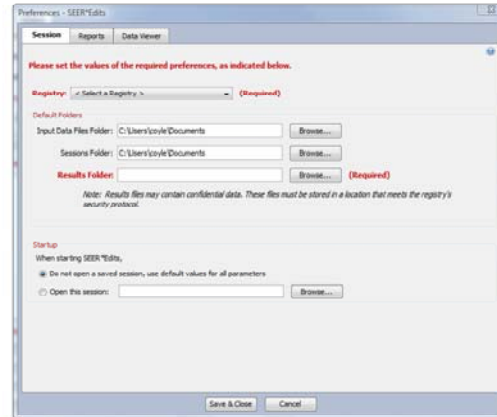
Default Folders

Specify the folders that you will typically use for SEER*Edits input and output files:

- ❑ **Input Data Files Folder** - This folder will open when you first browse for an input data file.
- ❑ **Sessions Folder** - This folder will be selected by default when you save a session.
- ❑ **Results Folder** - Reports and output files will be stored in this folder each time a session is executed. SEER*Edits reports and output files may contain confidential data. These files must be stored in a location that meets the registry's security protocol.

The SEER*Edits system preferences let you set default values for parameters and folders. This will save you time when you create and execute SEER*Edits sessions. Reports and output files will always be stored in the Results Folder specified in preferences. The result files may contain confidential data, therefore, you must specify a Results Folder that meets your registry's security protocols.

System Preferences



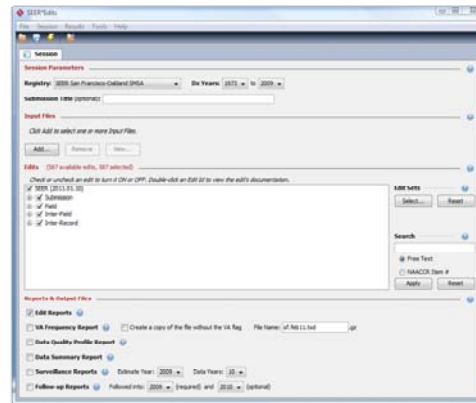
Startup

You may start SEER*Edits using one of two options:

- ❑ **Use the default values for all parameters (recommended).** A new session will open each time you start SEER*Edits. Values defined in the Session preferences will be used by default.
- ❑ **Open a saved session.** You may use this option if you have saved your own default settings in a session file. This option would be convenient if you repeatedly execute SEER*Edits using an input file with the same name, the same set of edits, and the same Report & Output File parameters.

There are two options in the Startup section of the Preferences. You may start SEER*Edits using one of two options. It is recommended that you set it to “use the default values for all parameters”. A new session will open each time you start SEER*Edits. Values defined in the Session preferences will be used by default.

Creating a Session



Click the question marks on the Sessions tab to view help text.

Session Parameters

Registry and DX years default to the values in System Preferences.

Input Files

Click Add to create a list of files. You may edit one or more data files in a single session. Text, zip and gzip compressed text files are supported.

Edits

You may run all SEER edits or ignore specific edits by turning them OFF. In this version of the software you may select a subset of edits by using an Edit Set. You will be able to create Edit Sets in a future version.

Reports & Output Files

Several reports and output files can be created when you execute a SEER*Edits session.

To review the algorithms used for a report, click the help icon next to the report title on the Sessions tab.

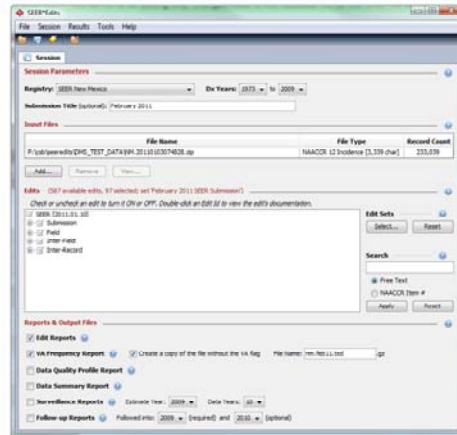
Create and execute a SEER*Edits session to validate data and generate reports. You can view help text about each feature by clicking the help icons on the right-side of the screen.

--In the Session Parameters, the Registry and DX years will default to the values in System Preferences. The Submission Title will be used as a sub-title on many reports.

--Click Add to create a list of input files. Text, zip and gzip compressed text files are supported.

--You may run all SEER edits or ignore some of the edits by turning them OFF. You may select a subset of edits by picking an Edit Set. In this version, you can use pre-defined edit sets. You will be able to create and save edit sets in a future version.

Sample Session



Session Parameters

Data from the New Mexico registry (1973-2009) will be edited for the February 2011 SEER submission.

Input Files

In this example, the original extract file created by SEER*DMS EXT-02 has been added to the list of Input Files. This zipped archive includes 4 files written by SEER*DMS (the SEER Submission File, IHS Linkage File, Medicare Linkage File, and Submission Record IDs). SEER*Edits will process the SEER Submission file and ignore the other files in the archive.

Edits

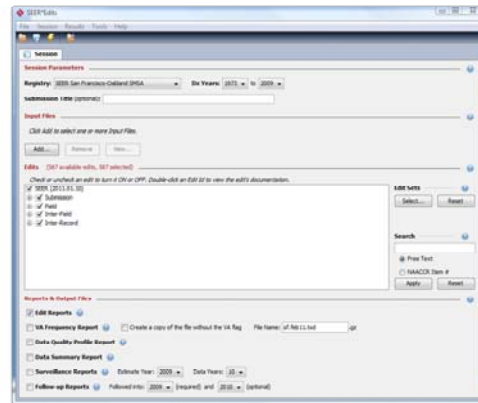
Typically, you would run all SEER edits but you may occasionally want to run a subset of edits. In this example, the February 2011 Submission edits are selected.

Reports & Output Files

The Edit Reports and VA Frequency Report will be created from this session. A copy of the input file without the VA flag will be created. The file name uses the format required for SEER submission files. This file will be submitted to SEER.

This screen shot shows one example of using SEER*Edits to process data for a February SEER submission. In this example, the input file is a SEER*DMS extract file. The incidence data file includes the coded value for the VA flag. The VA Frequency Report and a copy of the input file without the file will be created. The file without the VA flag is the file that will be submitted to SEER.

Executing a Session



Click the lightning bolt to execute the SEER*Edits session.

Click the lightning bolt in the toolbar to execute the session. SEER*Edits will create a new tab with the Results.

The algorithms for each of the reports are documented in the SEER*Edits help system.