



The California Cancer Registry (CCR) is a statewide population-based cancer registry that collects information on all cancers diagnosed in California. State law requires all cancers* diagnosed in California to be reported. The CCR aggregates this data, performs many phases of quality control, and analyzes the data on a statewide basis.

[Read More](#)



Purpose of Cancer Registries

Cancer registries are essential for collecting, compiling, and analyzing cancer data throughout the state and also throughout the country.



Cancer Reporting Legislation

Cancer reporting is regulated by federal and state laws. Together, these laws establish the requirements for reporting, the accuracy, quality, and timeliness of reporting, and protect patient confidentiality.



Information for Patients

Progress in the treatment of cancer is largely a result of gathering information from people like you. But we still have a long way to go in the fight against cancer.



LEARN

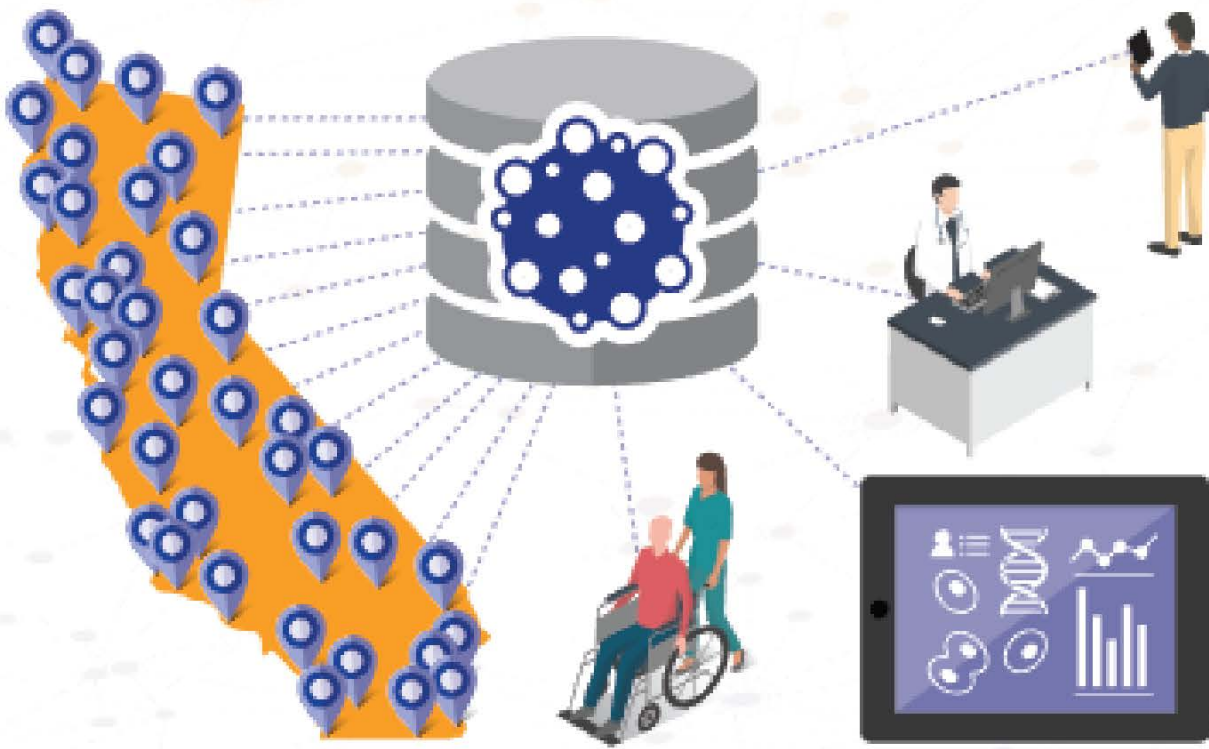


REPORT



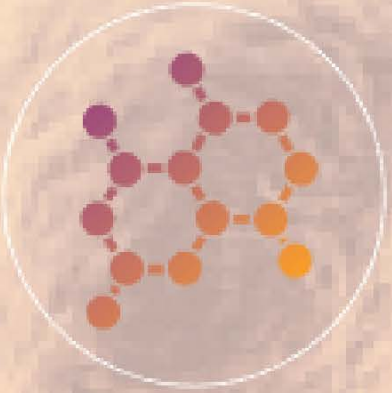
RETRIEVE

California Cancer Registry (CCR) is a comprehensive state-wide cancer surveillance program and resource for the cancer community. We collect information about almost all cancers diagnosed in California. This information furthers our understanding of cancer and is used to develop strategies and policies for its prevention, treatment, and control. CCR aims to streamline reporting methods and to collect information critical to advancing the future of cancer treatment.



30

YEARS OF
CANCER RESEARCH



5.8M

CANCER CASES
FOR RESEARCH



190K

CASES ADDED
ANNUALLY

About California Cancer Registry

Quick Links



The California Cancer Registry (CCR) is a statewide population-based cancer registry that collects information on all cancers diagnosed in California. State law requires all cancers* diagnosed in California to be reported. The CCR aggregates this data, performs many phases of quality control, and analyzes the data on a statewide basis.

These programs support the ongoing work of CCR:



University of
Southern California



CANCER PREVENTION INSTITUTE
OF CALIFORNIA

Institute of Population
Health Improvement

California also participates in the Centers for Disease Control and Prevention's (CDC) National Program of Cancer Registries (NPCR), and in the Surveillance, Epidemiology, and End Results (SEER) program of the National Cancer Institute. CCR data meets all NPCR and SEER standards for quality, timeliness and completeness. At CCR, our primary goals are to continue to streamline the process of reporting and to ensure that the data we obtain is of the highest accuracy and quality.

*CCR does not collect data on non-melanoma skin cancers and carcinoma in-situ of the cervix.

[Physician Reporting](#)

[Pathologist Reporting](#)

[Health Information
Exchange Gateway \(HIE\)](#)

ABOUT CCR:

IN THIS SECTION

[Purpose of cancer
registries](#)

[Cancer reporting
legislation](#)

[Information for
patients](#)

CCR is an Integrated Surveillance Program



Physicians, pathologists, hospitals, and treatment facilities collect and report cancer data



CCR receives this data and checks for accuracy



CCR aggregates and analyzes the data and researchers use CCR data to make new discoveries about cancer diagnosis, patterns, and treatment outcomes

How Reporting On Cancer Improves Outcomes



DIAGNOSIS

Provides near-time incidence rates and connects patients with clinical trials.



TREATMENT

Population-based reporting shows trends in occurrence and re-occurrence rates.



ANALYSIS

Aggregated, large-volume data enables a variety of cancer research.



OUTCOMES

High-volume and high-quality data increases the reliability of research results. This enables cancer professionals to make well-informed decisions that improve the diagnosis and treatment of cancer.



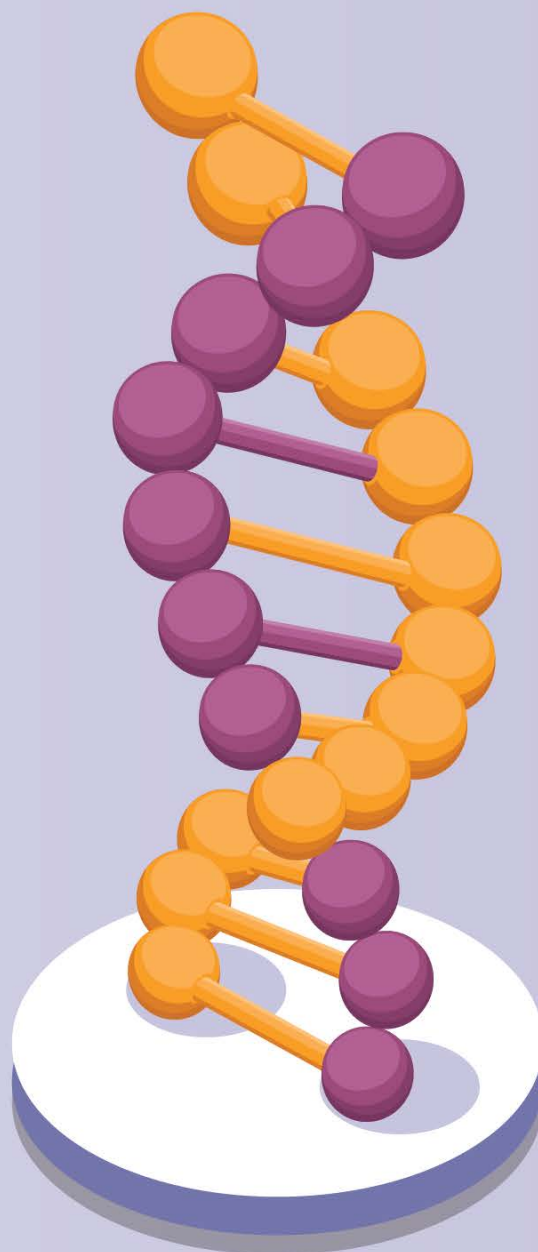
A national system of cancer registries can help us **understand the disease better and use our resources to the best effect in prevention and treatment.**

—Donna E. Shalala, PhD, Former Secretary, U.S. Department of Health and Human Services

What has CCR Accomplished?

Among its considerable contributions, California Cancer Registry:

- Is internationally recognized for its high-quality data
- Receives major grants to investigate the causes, prevention and the cures of cancer
- Brings millions of research dollars to California
- Provides information on cancer rates among the state's diverse race/ethnicity groups
- Publishes special reports on many cancer types
- Provides the public access to state, regional, and county level cancer incidence and mortality rates plus interactive maps





Purpose of Cancer Registries

 Quick Links

Cancer registries are essential for collecting, compiling, and analyzing cancer data throughout the state and also throughout the country. Cancer registries across the country collect data on nearly 1.6 million cancer cases each year, including information on location, how cancer spreads, and how cancer is treated.

These registries help measure and study the burden of cancer in our communities, to help identify the causes of these cancers, and to find cures for these diseases. Regional and statewide registries report their data to the National Cancer Institute's national registry, the Surveillance, Epidemiology, and End Results Program (SEER). Across the country, these registries give researchers, physicians, and other vital health professionals the information they need to identify cancer trends, causes, geographic statistics, and racial/ethnic, and occupational risks in one central location.

[Physician Reporting](#)[Pathologist Reporting](#)[Health Information
Exchange Gateway \(HIE\)](#)

ABOUT CCR: IN THIS SECTION

[**Cancer reporting
legislation**](#)[**Information for
patients**](#)